

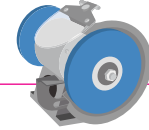
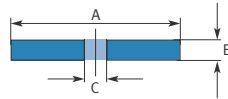
Meta-Rock

General Purpose Wheels for Bench or Pedestal Grinders
 Make from high-class grain – Available also based on grain of carbide.



Use

Grey (General Purpose): This type of millstone is used for various jobs on steel.
Green (Carbide): The green grinding wheels are made of silicon carbide grains. It is commonly used for grinding carbide tools.



| Size in inches A x B x C | Grit | Product No | Size in inches A x B x C | Grit | Product No |
|-----------------------------|------|------------|-----------------------------|------|------------|
|-----------------------------|------|------------|-----------------------------|------|------------|

Meta-Rock (Grey) – general use

| | | |
|-------------|-----|---------|
| 6 x 3/4 x 1 | A36 | 99-634C |
| 6 x 3/4 x 1 | A46 | 99-634M |
| 6 x 3/4 x 1 | A80 | 99-634F |

| | | |
|-----------|-----|---------|
| 6 x 1 x 1 | A36 | 99-601C |
| 6 x 1 x 1 | A46 | 99-601M |
| 6 x 1 x 1 | A80 | 99-601F |

| | | |
|-----------|-----|---------|
| 7 x 1 x 1 | A36 | 99-701C |
| 7 x 1 x 1 | A46 | 99-701M |
| 7 x 1 x 1 | A80 | 99-701F |

| | | |
|-------------|-----|---------|
| 8 x 3/4 x 1 | A36 | 99-834C |
| 8 x 3/4 x 1 | A46 | 99-834M |
| 8 x 3/4 x 1 | A80 | 99-834F |

| | | |
|-----------|-----|---------|
| 8 x 1 x 1 | A36 | 99-801C |
| 8 x 1 x 1 | A46 | 99-801M |
| 8 x 1 x 1 | A80 | 99-801F |

| | | |
|---------------|-----|---------|
| 8 x 1 1/4 x 1 | A36 | 99-814C |
| 8 x 1 1/4 x 1 | A46 | 99-814M |
| 8 x 1 1/4 x 1 | A80 | 99-814F |

| | | |
|------------|-----|---------|
| 10 x 1 x 1 | A36 | 99-101C |
| 10 x 1 x 1 | A46 | 99-101M |
| 10 x 1 x 1 | A80 | 99-101F |

| | | |
|----------------|-----|---------|
| 10 x 1 1/4 x 1 | A36 | 99-114C |
| 10 x 1 1/4 x 1 | A46 | 99-114M |
| 10 x 1 1/4 x 1 | A80 | 99-114F |

Meta-Rock (Green) – carbide grains

| | | |
|---------------|-----|---------|
| 6 x 3/4 x 1 | C80 | 99-0634 |
| 7 x 1 x 1 | C80 | 99-0701 |
| 7 x 1 1/4 x 1 | C80 | 99-0714 |

| | | |
|---------------|-----|---------|
| 8 x 7/8 x 1 | C80 | 99-0878 |
| 8 x 1 x 1 | C80 | 99-0801 |
| 8 x 1 1/4 x 1 | C80 | 99-0814 |

| | | |
|------------|-----|---------|
| 10 x 1 x 1 | C80 | 99-0010 |
|------------|-----|---------|

Grit 36: Rough grinding
 Grit 46: intermediate requirements
 Grit 80: finer finishing

6" Max RPM : 4100

7" Max RPM : 3600

8" Max RPM : 3600

10" Max RPM : 2500

All of our Meta-Rock are equipped with a set of bushings to fit the following shaft diameters: 1/2", 5/8", 3/4" and 1"

